



# INSTAL-SERVICE PL

Spółka z ograniczoną odpowiedzialnością  
Spółka komandytowa

58-506 Jelenia Góra, ul. Wrocławska 15a

## Through connection block type BPP2-1U3/1 for rated voltage 500V



Through connection block type BPP2-1U3/1 is a device designed for use in underground mining pits in non-explosive coal dust conditions and on the ground.

Through connection block type BPP2-1U3/1 is designed for connecting and distributing power in mine three-phase grid with isolated star point transformer (IT system) for rated grid voltage of 500V.

### TECHNICAL DATA

ingress protection	IP54
insulation rated voltage of main circuits	660 V
rated power supply voltage	3x500V, 50Hz, IT grid
rated current	315 A
dimensions	550 x 900 x 350 (H x W x D)
weight	50 kg

## CONSTRUCTION

The through connection block is composed of a housing mounted on a frame construction, equipped with brackets. The frame construction allows the device to be hung on the pit wall.

## MODE OF OPERATION

In the main 3x500V circuit the through connection block is equipped with a three-position switch: on-off-grounded.

Every position of the switch can be locked by putting a lock on the switches drive lever. The block's door can only be opened if the switch is in the grounded position.

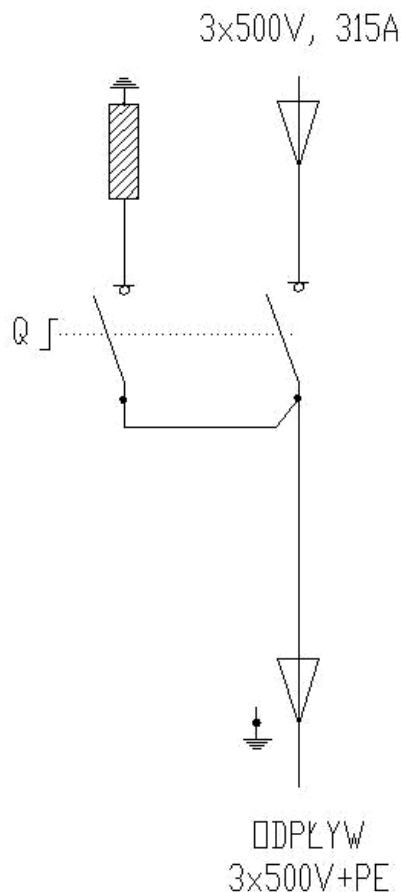
Through connection block type BPP2-1U3/1 can be used to connection main circuits and outlets circuits. Grounded position of the Q switch ensures safe work on the block's outlet.

## SCHEMATIC DIAGRAM

### Legend:

Odpyw – outlet

Q - Trójpozycyjny przełącznik – Three-position switch Q



Q-trójpozycyjny przełącznik  
(załączony-wyłączony-uziemiony odpyw)

Orders should be submitted in writing or by fax to the address:

 **Instal-Service PL**

Spółka z ograniczoną odpowiedzialnością  
Spółka komandytowa

58-506 Jelenia Góra, ul. Wrocławska 15a  
tel. (+48 075) 64-57-950  
fax. (+48 075) 64-57-951  
e-mai: instal@instal-service.pl